

**TECHNICAL MANUAL**

**ORGANIZATIONAL MAINTENANCE  
REPAIR PARTS AND SPECIAL TOOLS LIST**

**FOR**

**RIFLE, RECOILLESS, 106-MM:  
M40A2 (1015-00-133-8484)  
AND M40A4 (1015-00-133-8485)**

---

**HEADQUARTERS, DEPARTMENT OF THE ARMY**

**MAY 1986**

**Organizational Maintenance Repair Parts  
and Special Tools List  
for  
RIFLE, RECOILLESS, 106-MM  
M40A2 (1015-00-133-8484)  
AND  
M40A4 (1015-00-133-8485)**

Current as of 9 January 1986

**REPORTING ERRORS AND RECOMMENDING IMPROVEMENTS**

You can help improve this manual. If you find any mistakes or if you know of a way to improve the procedures, please let us know. Mail your letter, DA Form 2028 (Recommended Changes to Publications and Blank Forms), or DA Form 2028-2 located in back of this manual direct to: Commander, US Army Armament, Munitions and Chemical Command, ATTN: AMSMC-MAS, Rock Island, IL, 61299-6000. A reply will be furnished to you.

**TABLE OF CONTENTS**

|   | <b>Page</b> | <b>Illus<br/>Figure</b> |
|---|-------------|-------------------------|
| Section I. INTRODUCTION .....   | 1           |                         |
| Section II. REPAIR PARTS LIST .....   | 1-1         |                         |
| Group 00 Rifle, recoilless, 106-mm M40A2 11578739 and<br>rifle, recoilless, 106-mm M40A4 11578740 ..... | 1-1         | 1                       |
| Group 01 Gun spotting, caliber .50: M8C 7268115 .....   | 2-1         | 2                       |
| 0101 Bolt assembly 7266341 .....  | 3-1         | 3                       |
| 0104 Firing mechanism assembly 7268119 .....  | 4-1         | 4                       |
| Group 02 Telescope, elbow: M92F 8286960 .....   | 5-1         | 5                       |
| Group 04 Cannon, 106-mm, M206 11578014 and<br>0405 Hinge assembly 7308856 .....                         | 6-1         | 6                       |
| Group 04 Cannon, 106-mm, M206 11578014 and<br>0406 Vent assembly 7309187 .....                          | 7-1         | 7                       |
| Group 04 Cannon, 106-mm, M206 11578014 .....  | 8-1         | 8                       |
| 0401 Cartridge case detent assembly 7230797 .....   | 9-1         | 9                       |
| 0403 Breechblock operating lever 7307520 .....  | 10-1        | 10                      |
| 0404 Lanyard rod assembly 7307472 .....   | 11-1        | 11                      |
| Group 13 Artillery cleaning brush .....   | 12-1        | 12                      |

\*This manual supersedes TM 9-1015-221-20P, dated 27 June 1969, including all changes.

TABLE OF CONTENTS

|              |   |  | Page | Illus<br>Figure |
|--------------|---|--|------|-----------------|
| Section III. | SPECIAL TOOLS LIST .....                          |  | 13-1 |                 |
| Group 9500   | Special tools .....                               |  | 13-1 | 13              |
| Section IV.  | NATIONAL STOCK NUMBER AND PART NUMBER INDEX ..... |  | I-1  |                 |

**ORGANIZATIONAL, MAINTENANCE  
REPAIR PARTS AND SPECIAL TOOLS LIST**

**Section I. INTRODUCTION**

**1. SCOPE.** This RPSTL lists and authorizes spares and repair parts; special tools; special test, measurement, and diagnostic equipment (TMDE); and other special support equipment required for performance of organizational maintenance of the 106-MM recoilless rifle. It authorizes the requisitioning, issue, and disposition of spares, repair parts and special tools indicated by the Source, Maintenance and Recoverability (SMR) codes.

**2. GENERAL.** In addition to Section I, Introduction, this Repair Parts and Special Tools List is divided into the following sections:

*a. Section II. Repair Parts List.* A list of spares and repair parts authorized by this RPSTL for use in the performance of maintenance. The list also includes parts which must be removed for replacement of the authorized parts. Parts lists are composed of functional groups in ascending alphanumeric sequence, with the parts in each group listed in ascending figure and item number sequence. Bulk materials are listed in item name sequence. Repair parts kits are listed separately in their own functional group within section II. Repair parts for repairable special tools are also listed in this section. Items listed are shown on the associated illustration(s) /figure(s).

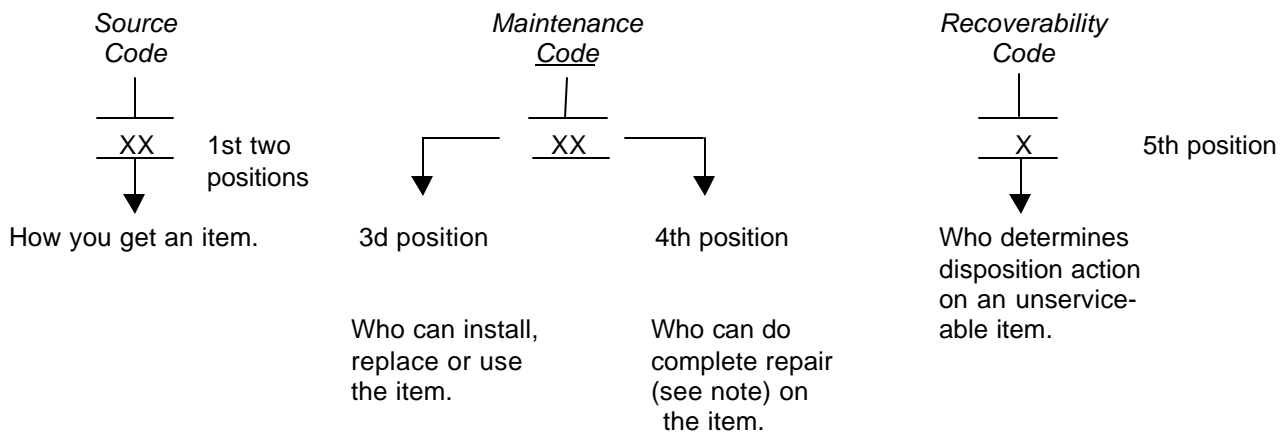
*b. Section III. Special Tools List.* A list of special tools, special TMDE, and other special support equipment authorized by this RPSTL (as indicated by Basis of Issue (BOI) information in DESCRIPTION AND USABLE ON CODE column) for the performance of maintenance.

*c. Section IV. National Stock Number and Part Number Index.* A list, in National item identification number (NIIN) sequence, of all National stock numbered items appearing in the listing, followed by a list in alphanumeric sequence of all part numbers appearing in the listings. National stock numbers and part numbers are cross-referenced to each illustration figure and item number appearance.

**3. EXPLANATION OF COLUMNS (SECTIONS II AND III).**

*a. ITEM NO. (Column (1)).* Indicates the number used to identify items called out in the illustration.

*b. SMR CODE (Column (2)).* The Source, Maintenance, and Recoverability (SMR) code is a 5-position code containing supply/requisitioning information, maintenance category authorization criteria, and disposition instruction, as shown in the following breakout:



\*Complete Repair: Maintenance capacity, capability, and authority to perform all corrective maintenance tasks of the "Repair" function in a use/user environment in order to restore serviceability to a failed item.

(1) Source code. The source code tells you how you get an item needed for maintenance, repair, or overhaul of an end item/equipment. Explanations of source codes follow:

| <i>Code</i>   | <i>Explanation</i>  |
|---|---|
| <div style="border-left: 1px solid black; border-right: 1px solid black; padding: 2px;">                     PA<br/>                     PB<br/>                     PC<br/>                     PD<br/>                     PE<br/>                     PF<br/>                     PG                 </div>  | <p>Stocked items; use the applicable NSN to request/requisition items with these source codes. They are authorized to the category indicated by the code entered in the 3d position of the SMR code.</p> <p><b>**NOTE: Items coded PC are subject to deterioration.</b></p>   |
| <div style="border-left: 1px solid black; border-right: 1px solid black; padding: 2px;">                     KD<br/>                     KF<br/>                     KB                 </div>  | <p>Items with these codes are not to be requested/requisitioned individually. They are part of a kit which is authorized to the maintenance category indicated in the 3d position of the SMR code. The complete kit must be requisitioned and applied.</p>  |
| <div style="border-left: 1px solid black; border-right: 1px solid black; padding: 2px;">                     MO - Made at org/AVUM category<br/>                     MF - Made at DS/AVUM category<br/>                     MH - Made at GS category<br/>                     ML - Made at Specialized Repair Activity (SRA)<br/>                     MD - Made at Depot                 </div> | <p>Items with these codes are not to be requested/requisitioned individually. They must be made from bulk material which is identified by the part number in the DESCRIPTION AND USABLE ON CODE (UOC) column and listed in the bulk material group in the repair parts list in this RPSTL. If the item is authorized to you by the 3d position code of the SMR code, but the source code indicates it is made at a higher level, order the item from the higher level of maintenance.</p> |
| <div style="border-left: 1px solid black; border-right: 1px solid black; padding: 2px;">                     AO - Assembled by org/AVUM category<br/>                     AF - Assembled by DS/AVIM category<br/>                     AH - Assembled by GS category<br/>                     AL - Assembled by SRA<br/>                     AD - Assembled by Depot                 </div>      | <p>Items with these codes are not to be requested/requisitioned individually. The parts that make up the assembled item must be requisitioned or fabricated and assembled at the level of maintenance indicated by the source code. If the 3d position code of the SMR code authorizes you to replace the item, but the source code indicates the item is</p>   |
| XA -  | Do not requisition an "XA" -coded item. Order its next higher assembly. (Also, refer to the NOTE below.)  |
| XB -  | If an "XB" item is not available from salvage, order it using the FSCM and part number given.   |
| XC -  | Installation drawing, diagram, instruction sheet, field service drawing, that is identified by manufacturer's part number.  |
| XD -  | Item is not stocked. Order an "XD" -coded item through normal supply channels using the FSCM and part number given, if no NSN is available.   |

**NOTE**

**Cannibalization or controlled exchange, when authorized, may be used as a source of supply for items with the above source codes, except for those source coded "XA" or those aircraft support items restricted by requirements of AR 700-42.**

(2) Maintenance code. Maintenance codes tell you the level(s) of maintenance authorized to USE and REPAIR support items. The maintenance codes are entered in the third and fourth positions of the SMR code as follows:

(a) The maintenance code entered in the third position tells you the lowest maintenance level authorized to remove, replace, and use an item. The maintenance code entered in the third position will indicate authorization to one of the following levels of maintenance:

| <i>Code</i> | <i>Application/Explanation</i>  |
|-------------|---|
| C -         | Crew or operator maintenance done within organizational or aviation unit maintenance. |
| 0 -         | Organizational or aviation unit category can remove, replace, and use the item.       |
| F -         | Direct support or aviation intermediate level can remove, replace, and use the item.  |
| H -         | General support level can remove, replace, and use the item.                          |
| L -         | Specialized repair activity can remove, replace, and use the item.                    |
| D -         | Depot level can remove, replace, and use the item.                                    |

(b) The maintenance code entered in the fourth position tells you whether or not the item is to be repaired and identifies the lowest maintenance level with the capability to do complete repair (i.e., perform all authorized repair functions).

**NOTE**

**Some limited repair may be done on the item at a lower level of maintenance, if authorized by the Maintenance Allocation Chart (MAC) and SMR codes.**

This position will contain one of the following maintenance codes:

| <i>Code</i> | <i>Application/Explanation</i>  |
|-------------|---|
| O -         | Organizational or aviation unit is the lowest level that can do complete repair of the item.  |
| F -         | Direct support or aviation intermediate is the lowest level that can do complete repair of the item.  |
| H -         | General support is the lowest level that can do complete repair of the item.  |
| L -         | Specialized repair activity (designate the specialized repair activity) is the lowest level that can do complete repair of the item.  |
| D -         | Depot is the lowest level that can do complete repair of the item.  |
| Z -         | Nonreparable. No repair is authorized.  |
| B -         | No repair is authorized. No parts or special tools are authorized for the maintenance of a "B" coded item. However, the item may be reconditioned by adjusting, lubricating, etc., at the user level. |

(3) Recoverability code. Recoverability codes are assigned to items to indicate the disposition action on unserviceable items. The recoverability code is entered in the fifth position of the SMR code as follows:

*Recoverability Codes*

*Application/Explanation*

- Z - Nonreparable item. When unserviceable, condemn and dispose of the item at the level of maintenance shown in 3d position of SMR code.
- 0 - Repairable item. When uneconomically repairable, condemn and dispose of the item at organizational or aviation unit level.
- F - Repairable item. When uneconomically repairable, condemn and dispose of the item at the direct support or aviation intermediate level.
- H - Repairable item. When uneconomically repairable, condemn and dispose of the item at the general support level.
- D - Repairable item. When beyond lower level repair capability, return to depot. Condemnation and disposal of item not authorized below depot level.
- L - Repairable item. Condemnation and disposal not authorized below specialized repair activity (SRA).
- A - Item requires special handling or condemnation procedures because of specific reasons (e.g., precious metal content, high dollar value, critical material, or hazardous material). Refer to appropriate manuals/directives for specific instructions.

c. *FSCM (Column (3))*. The Federal Supply Code for Manufacturer (FSCM) is a 5-digit numeric code which is used to identify the manufacturer, distributor, or Government agency, etc., that supplies the item.

d. *PART NUMBER (Column (4))*. Indicates the primary number used by the manufacturer (individual, company, firm, corporation, or Government activity), which controls the design and characteristics of the item by means of its engineering drawings, specifications standards, and inspection requirements to identify an item or range of items.

**NOTE**

**When you use an NSN to requisition an item, the item you receive may have a different part number from the part ordered.**

e. *DESCRIPTION AND USABLE ON CODE (UOC)(Column (5))*. This column includes the following information:

- (1) The Federal item name and, when required, a minimum description to identify the item.
- (2) Spare/repair parts that make up an assembled item are listed immediately following the assembled item line entry or reference is made to the applicable figure.
- (3) In the Special Tools List section, the basis of issue (BOI) appears as the last line(s) in the entry for each special tool, special TMDE, and other special support equipment. When density of equipments supported exceeds density spread indicated in the basis of issue, the total authorization is increased proportionately.
- (4) The statement "END OF FIGURE" appears just below the last item description in column 5 for a given figure in both section II and section III.

f. *QTY (Column (6))*. The QTY (quantity per figure column) indicates the quantity of the item used in the breakout shown on the illustration figure, which is prepared for a functional group, subfunctional group, or an assembly. A "V" appearing in this column in lieu of a quantity indicates that the quantity is variable and the quantity may vary from application to application.

**4. EXPLANATION OF COLUMNS (SECTION IV).**

a. *NATIONAL STOCK NUMBER (NSN) INDEX.*

(1) STOCK NUMBER column. This column lists the NSN by National item identification number (NIIN)

sequence. The NIIN consists of the last nine digits of the NSN (i.e.,  $\frac{NSN}{NIIN}$  5385-01-574-1476).

When using this column to locate an item, ignore the first 4 digits of the NSN. However, the complete NSN should be used when ordering items by stock number.

(2) FIG. column. This column lists the number of the figure where the item is identified/located. The figures are in numerical order in section II and section III.

(3) ITEM column. The item number identifies the item associated with the figure listed in the adjacent FIG. column. This item is also identified by the NSN listed on the same line.

b. *PART NUMBER INDEX.* Part numbers in this index are listed by part number in ascending alphanumeric sequence (i.e., vertical arrangement of letter and number combination which places the first letter or digit of each group in order A through Z, followed by the numbers 0 through 9 and each following letter or digit in like order).

(1) FSCM column. The Federal Supply Code for Manufacturer (FSCM) is a 5-digit numeric code used to identify the manufacturer, distributor, or Government agency, etc., that supplies the item.

(2) PART NUMBER column. Indicates the primary number used by the manufacturer (individual, firm, corporation, or Government activity), which controls the design and characteristics of the item by means of its engineering drawings, specifications standards, and inspection requirements to identify an item or range of items.

(3) STOCK NUMBER column. This column lists the NSN for the associated part number and manufacturer identified in the PART NUMBER and FSCM columns to the left.

(4) FIG. column. This column lists the number of the figure where the item is identified/located in sections II and III.

(5) ITEM column. The item number is that number assigned to the item as it appears in the figure referenced in the adjacent figure number column.

**5. SPECIAL INFORMATION.**

a. *Assembly Instructions.* Detailed assembly instructions for items source coded to be assembled from component spare/repair parts are found in TM 9-1015-221-12. Items that make up the assembly are listed immediately following the assembly item entry or reference is made to an applicable figure.

b. *Associated Publications.* The publication(s) listed below pertain to the 106-MM recoilless rifle and its components:

| <i>Publication</i> | <i>Short Title</i>                         |
|--------------------|--|
| LO 9-1015-221-12   | Rifle, Recoilless, 106-MM: M40A2 and M40A4 |
| TM 9-1015-221-12   | Rifle, Recoilless, 106-MM: M40A2 and M40A4 |
| TM 9-1015-221-34   | Rifle, Recoilless, 106-MM: M40A2 and M40A4 |
| TM 9-1015-221-34P  | Rifle, Recoilless, 106-MM: M40A2 and M40A4 |

c. *Illustrations - Listing.* The illustrations in this RPSTL are identical to those published in TM 9-1015-221-34P. Only those parts codes "C" or "O" in the third position of the SMR code are listed in the tabular listing; therefore, there may be a break in the item number sequence. Only illustrations containing organizational or aviation unit authorized items appear in this RPSTL.



**6. HOW TO LOCATE REPAIR PARTS.**a. *When National Stock Number or Part Number is Not Known:*

(1) First. Using the table of contents, determine the assembly group or subassembly group to which the item belongs. This is necessary since figures are prepared for assembly groups and subassembly groups, and listings are divided into the same groups.

(2) Second. Find the figure covering the functional group or subfunctional group to which the item belongs.

(3) Third. Identify the item on the figure and note the item number.

(4) Fourth. Refer to the Repair Parts List for the figure to find the part number for the item number noted on the figure.

(5) Fifth. Refer to the Part Number Index to find the NSN, if assigned.

b. *When National Stock Number or Part Number is Known:*

(1) First. Using the index of National stock numbers and part numbers, find the pertinent National stock number or part number. The NSN index is in National Item Identification Number (NIIN) sequence (see 4a(1)). The part numbers in the PART NUMBER INDEX are listed in ascending alphanumeric sequence (see 4b). Both indexes cross-reference you to the illustration figure and item number of the item you are looking for.

(2) Second. After finding the figure and item number, verify that the item is the one you're looking for, then locate the item number in the repair parts list for the figure.

**7. ABBREVIATIONS.** Not applicable.

Section II. REPAIR PARTS LIST

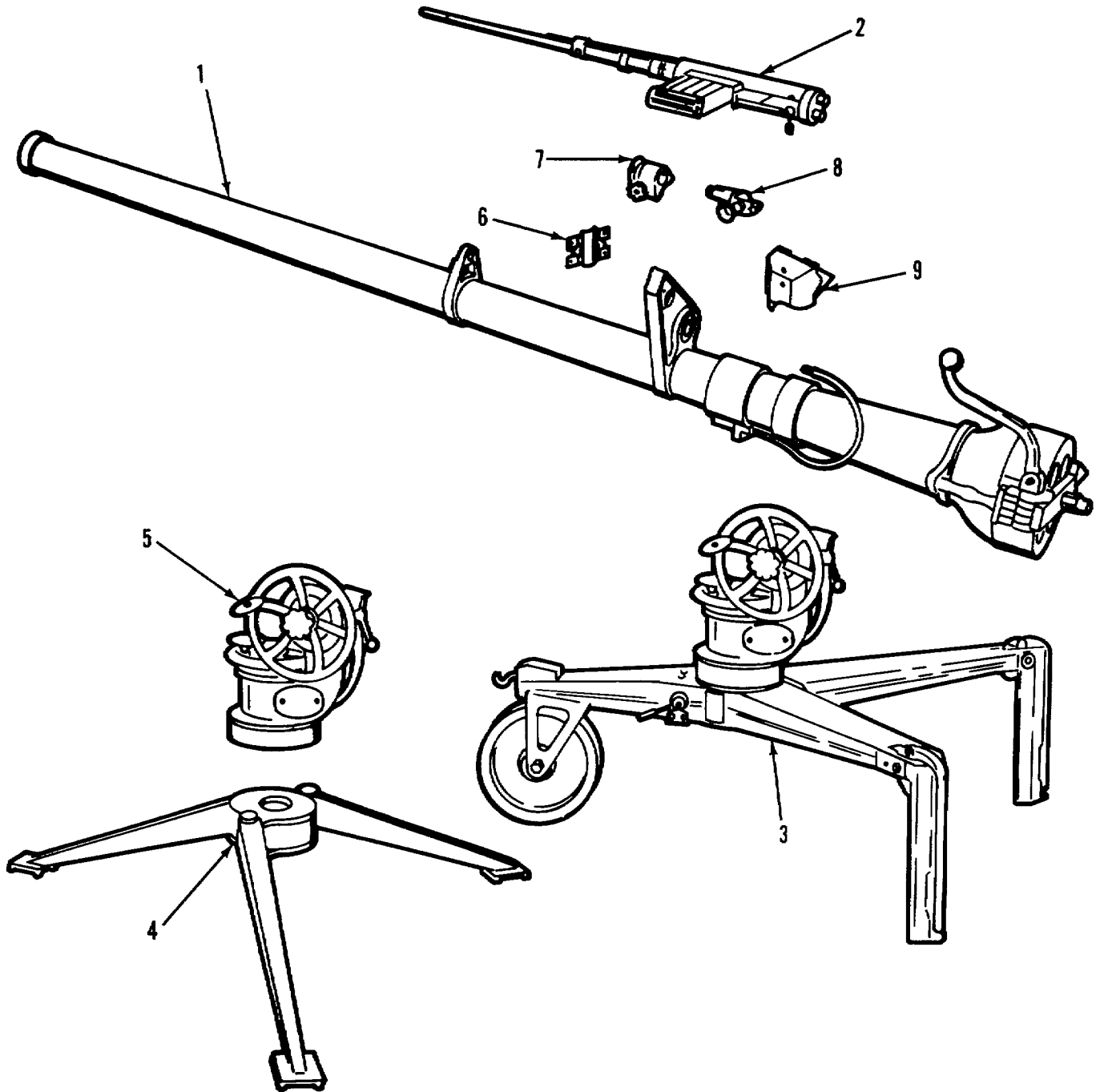


Figure 1. Rifle, Recoilless, 106-MM: M40A2 or M40A4.

SECTION II

TM 9-1015-221-20P

| (1)<br>ITEM<br>NO | (2)<br>SMR<br>CODE | (3)<br>FSCM | (4)<br>PART<br>NUMBER | (5)<br>DESCRIPTION AND USABLE ON CODES (UOC)                                | (6)<br>QTY |
|-------------------|--------------------|-------------|-----------------------|---|------------|
|                   |                    |             |                       | GROUP 00 RIFLE, RECOILLESS, 106-MM:<br>M40A2 (11578739) OR M40A4 (11578740) |            |
|                   |                    |             |                       | FIG. 1 RIFLE, RECOILLESS, 106MM:<br>M40A2 OR M40A4                          |            |
| 6                 | PAOFF              | 19200       | 8299677               | CLAMP .....   | 1          |
| 7                 | PAODD              | 19200       | 08299670              | MOUNT TELESCOPE, M90 .....  | 1          |
| 8                 | PACDD              | 19200       | 8286960               | TELESCOPE, ELBOW, M92F .....  | 1          |
| 9                 | PAOFF              | 19200       | 8293769               | COVER .....   | 1          |

END OF FIGURE

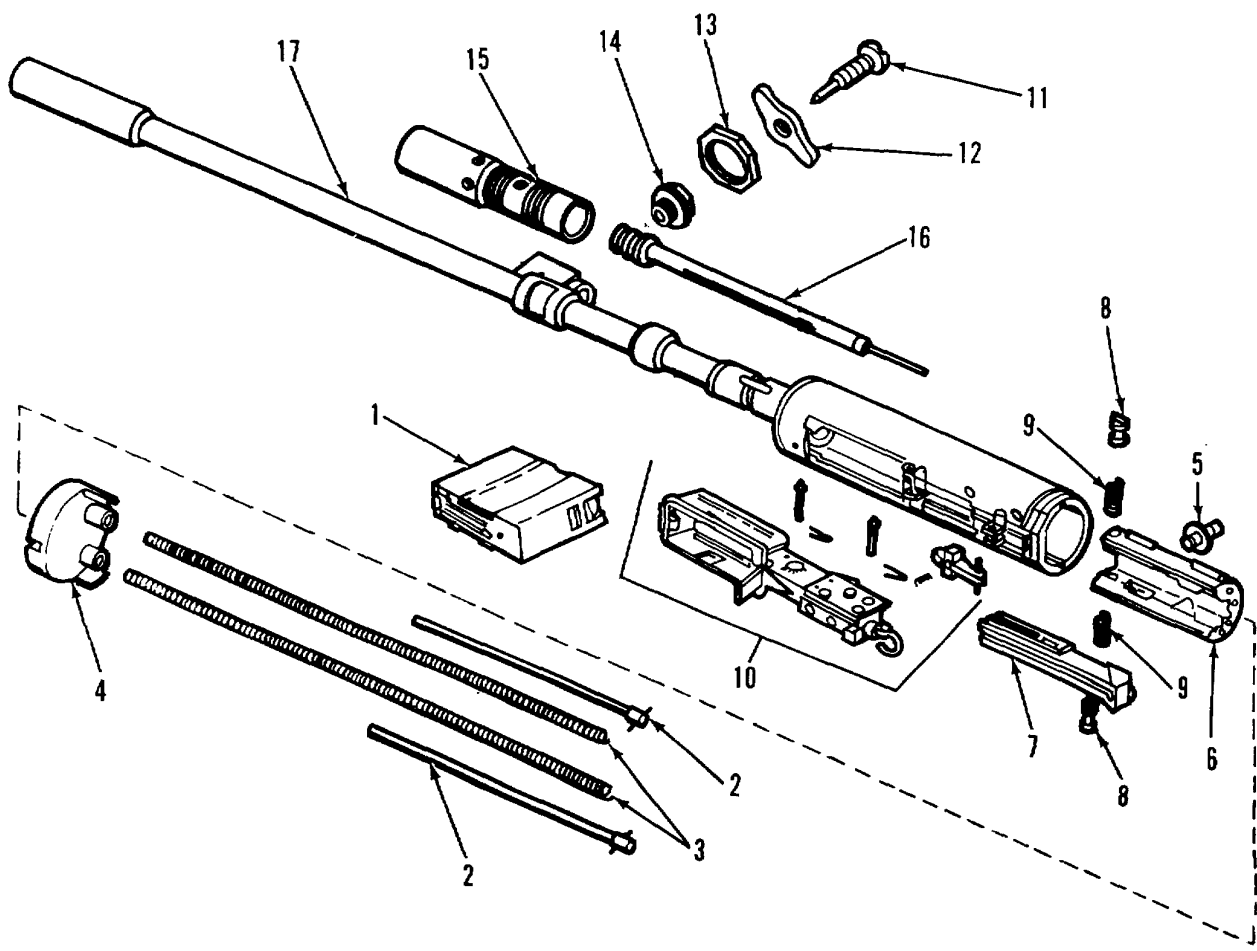


Figure 2. Gun, Spotting, Caliber 50: M80.

| (1)<br>ITEM<br>NO                                     | (2)<br>SMR<br>CODE | (3)<br>FSCM | (4)<br>PART<br>NUMBER | (5)<br>DESCRIPTION AND USABLE ON CODES (UOC)                | (6)<br>QTY |
|---|--------------------|-------------|-----------------------|---|------------|
| GROUP 01 GUN, SPOTTING, CALIBER .50:<br>MBC (7268115) |                    |             |                       |   |            |
| FIG. 2 GUN, SPOTTING,<br>CALIBER .50: MBC             |                    |             |                       |   |            |
| 1   | PAOZZ              | 19204       | 120030;6              | MAGAZINE, CARTRIDGE .....                                   | 1          |
| 2   | PAOZZ              | 19204       | 7267851               | ROC, GUIDE ASSEMBLY .....                                   | 2          |
| 3   | PAOZZ              | 19204       | 7791229               | SPRING, HELICAL COMPRESSION .....                           | 2          |
| 7   | AFOFF              | 19204       | 7266341               | BOLT, ASSEMBLY (SEE FIG. 3 FOR<br>ASSEMBLY BREAKDOWN) ..... | 1          |
| 8   | PACZZ              | 19204       | 7268393               | GUIDE, BOLT RECEIVER .....                                  | 2          |
| 9   | PACZZ              | 19204       | 7266415               | SPRING, HELICAL COMPRESSION .....                           | 2          |

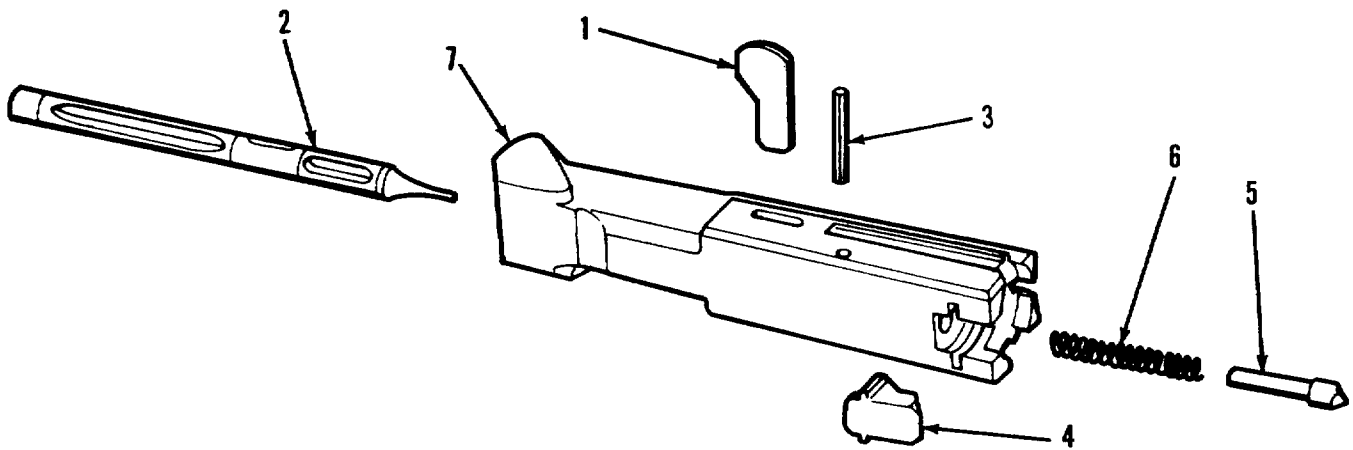


Figure 3. Bolt Assembly.

| (1)<br>ITEM<br>NO                  | (2)<br>SMR<br>CODE | (3)<br>FSCM | (4)<br>PART<br>NUMBER | (5)<br>DESCRIPTION AND USABLE ON CODES (UOC) | (6)<br>QTY |
|------------------------------------|--------------------|-------------|-----------------------|--|------------|
| GROUP 0101 BOLT ASSEMBLY (7266341) |                    |             |                       |  |            |
| FIG. 3 BOLT ASSEMBLY               |                    |             |                       |  |            |
| 1                                  | PACZZ              | 19204       | 7266400               | RETRACTOR, FIRING PIN .....                  | 1          |
| 2                                  | PACZZ              | 19204       | 7266374               | PIN, FIRING .....                            | 1          |
| 3                                  | PACZZ              | 96906       | MS16562-131           | PIN, SPRING .....                            | 1          |
| 4                                  | PACZZ              | 19204       | 7266357               | EXTRACTOR, CARTRIDGE .....                   | 1          |
| 5                                  | PACZZ              | 19204       | 7266393               | PLUNGER, EXTRACTOR .....                     | 1          |
| 6                                  | PACZZ              | 19204       | 7266416               | SPRING, HELICAL COMPRESSION .....            | 1          |

END OF FIGURE

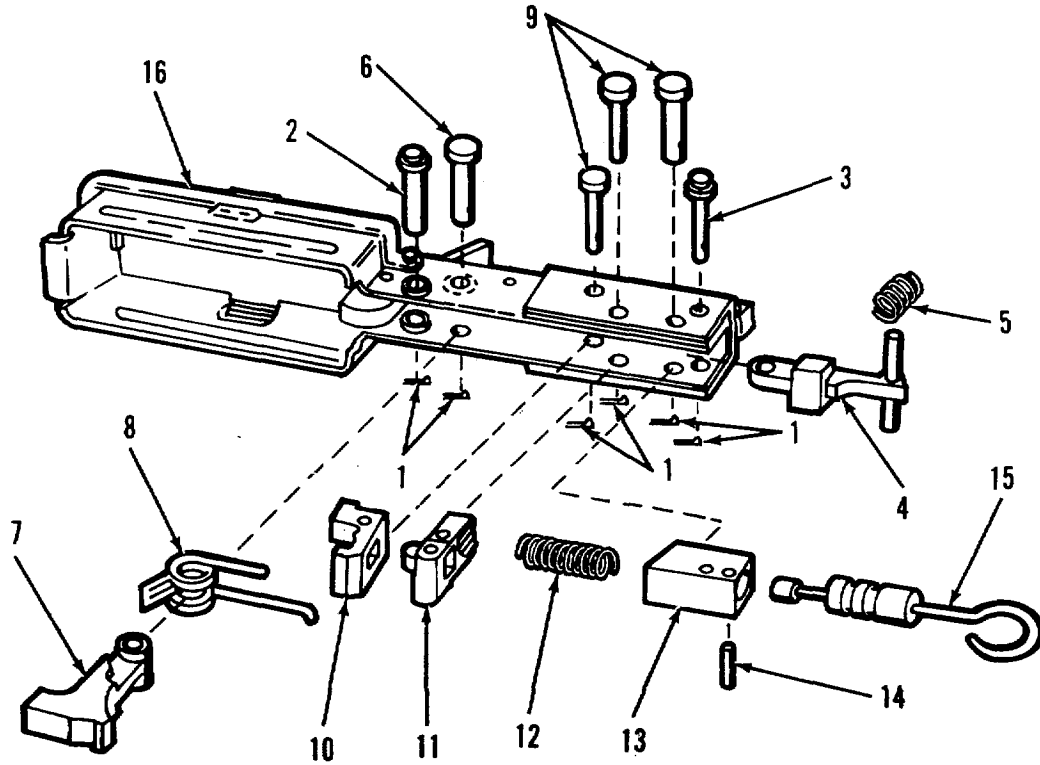


Figure 4. Firing Mechanism Assembly.

| (1)<br>ITEM<br>NO | (2)<br>SMR<br>CODE | (3)<br>FSCM | (4)<br>PART<br>NUMBER | (5)<br>DESCRIPTION AND USABLE ON CODES (UOC) | (6)<br>QTY |
|-------------------|--------------------|-------------|-----------------------|--|------------|
|-------------------|--------------------|-------------|-----------------------|--|------------|

GROUP 0104 FIRING MECHANISM ASSEMBLY  
(7268119)

FIG. 4 FIRING MECHANISM ASSEMBLY

|    |       |       |             |                            |   |
|----|-------|-------|-------------|----------------------------|---|
| 1  | PACZZ | 96906 | MS24665-814 | PIN, COTTER .....          | 6 |
| 14 | PAOZZ | 96906 | MS16562-120 | PIN, SPRING .....          | 1 |
| 15 | PAOZZ | 19204 | 7266561     | ROD, FIRING ASSEMBLY ..... | 1 |

END OF FIGURE

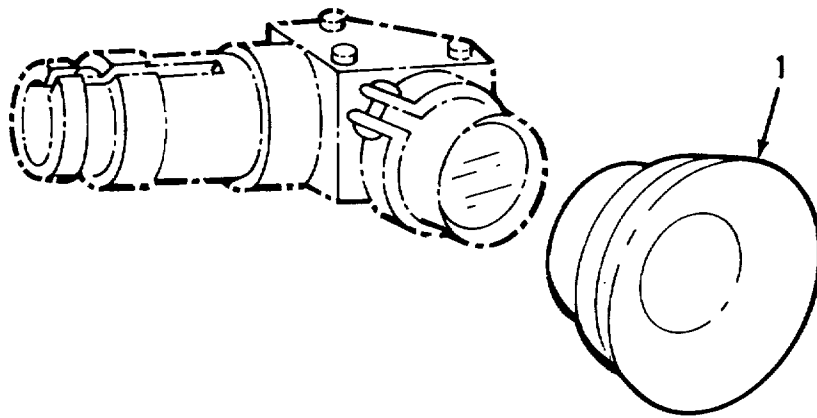


Figure 5. Telescope, Elbow: M92F.

| (1)<br>ITEM<br>NO | (2)<br>SMR<br>CODE | (3)<br>FSCM | (4)<br>PART<br>NUMBER | (5)<br>DESCRIPTION AND USABLE ON CODES (UOC) | (6)<br>QTY |
|-------------------|--------------------|-------------|-----------------------|--|------------|
|                   |                    |             |                       | GROUP 02 TELESCOPE, ELBOW: M92F<br>(8286960) |            |
|                   |                    |             |                       | FIG. 5 TELESCOPE, ELBOW: M92F                |            |
| 1                 | PAOZZ              | 19200       | 8228878               | EYE SHIELD .....                             | 1          |

END OF FIGURE

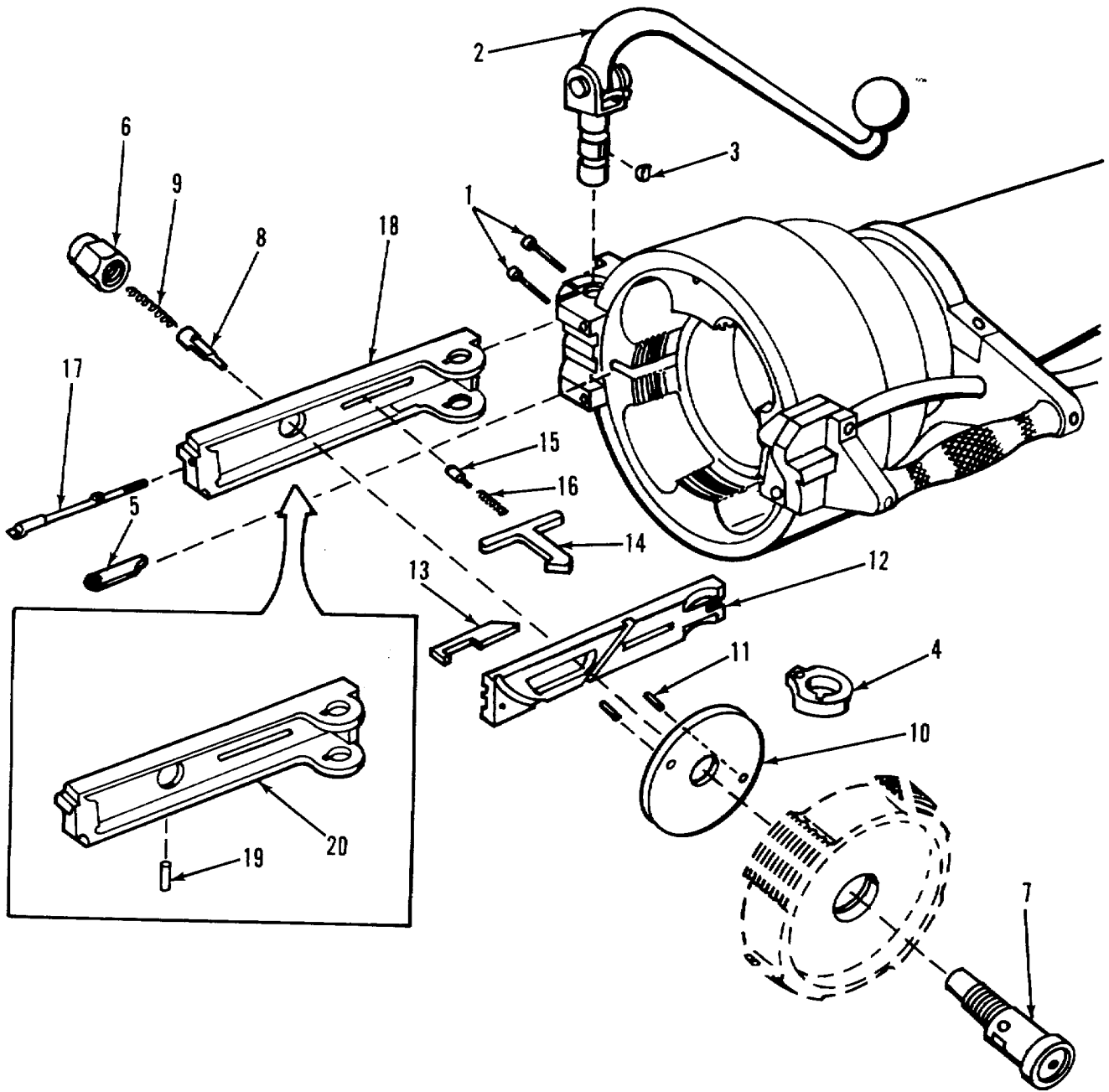


Figure 6. Cannon, 106-MM: M206 and Hinge Assembly.



| (1)<br>ITEM<br>NO | (2)<br>SMR<br>CODE | (3)<br>FSCM | (4)<br>PART<br>NUMBER | (5)<br>DESCRIPTION AND USABLE ON CODES (UOC)  | (6)<br>QTY |
|-------------------|--------------------|-------------|-----------------------|---|------------|
|                   |                    |             |                       | GROUP 04 CANNON, 106-MM: M206<br>(11578014) AND<br>GROUP 0405 HINGE ASSEMBLY<br>(7308856) |            |
|                   |                    |             |                       | FIG. 6 CANNON, 106-MM: M206 AND<br>HINGE ASSEMBLY   |            |
| 1                 | PAOZZ              | 96906       | MS16998-50            | SCREW, CAP, SOCKET HEAD.....  | 2          |
| 2                 | AOOOO              | 19206       | 7307520               | LEVER, BREECHBLOCK OPERATING (SEE.....<br>FIG. 10 FOR ASSEMBLY BREAKDOWN) .....           | 1          |
| 3                 | PACZZ              | 96906       | MS35756-6             | KEY, WOODRUFF .....   | 1          |
| 4                 | PAOFF              | 19206       | 8766017               | DOG ASSEMBLY .....  | 1          |
| 5                 | PACOO              | 19206       | 7230797               | DETENT ASSEMBLY .....   | 1          |
| 7                 | PAOZZ              | 19206       | 8766068               | HOUSING .....   | 1          |
| 8                 | PACZZ              | 19206       | 11578018              | PIN, FIRING .....   | 1          |
| 9                 | PACZZ              | 19206       | 7230810               | SPRING, HELICAL, COMPRESSION .....  | 1          |
| 11                | PACZZ              | 19206       | 7230807               | ROLLER, BEARING .....   | 2          |
| 13                | PACZZ              | 19206       | 11578017              | CAM, CONTROL .....  | 1          |
| 14                | PACZZ              | 19206       | 7230799               | EXTRACTOR, CARTRIDGE .....  | 1          |
| 15                | PAOZZ              | 19206       | 11578301              | PLUNGER, DETENT .....   | 1          |
| 16                | PAOZZ              | 19206       | 7230809               | SPRING, HELICAL COMPRESSION .....   | 1          |
| 17                | PACZZ              | 19206       | 11578019              | SEAR .....  | 1          |

END OF FIGURE

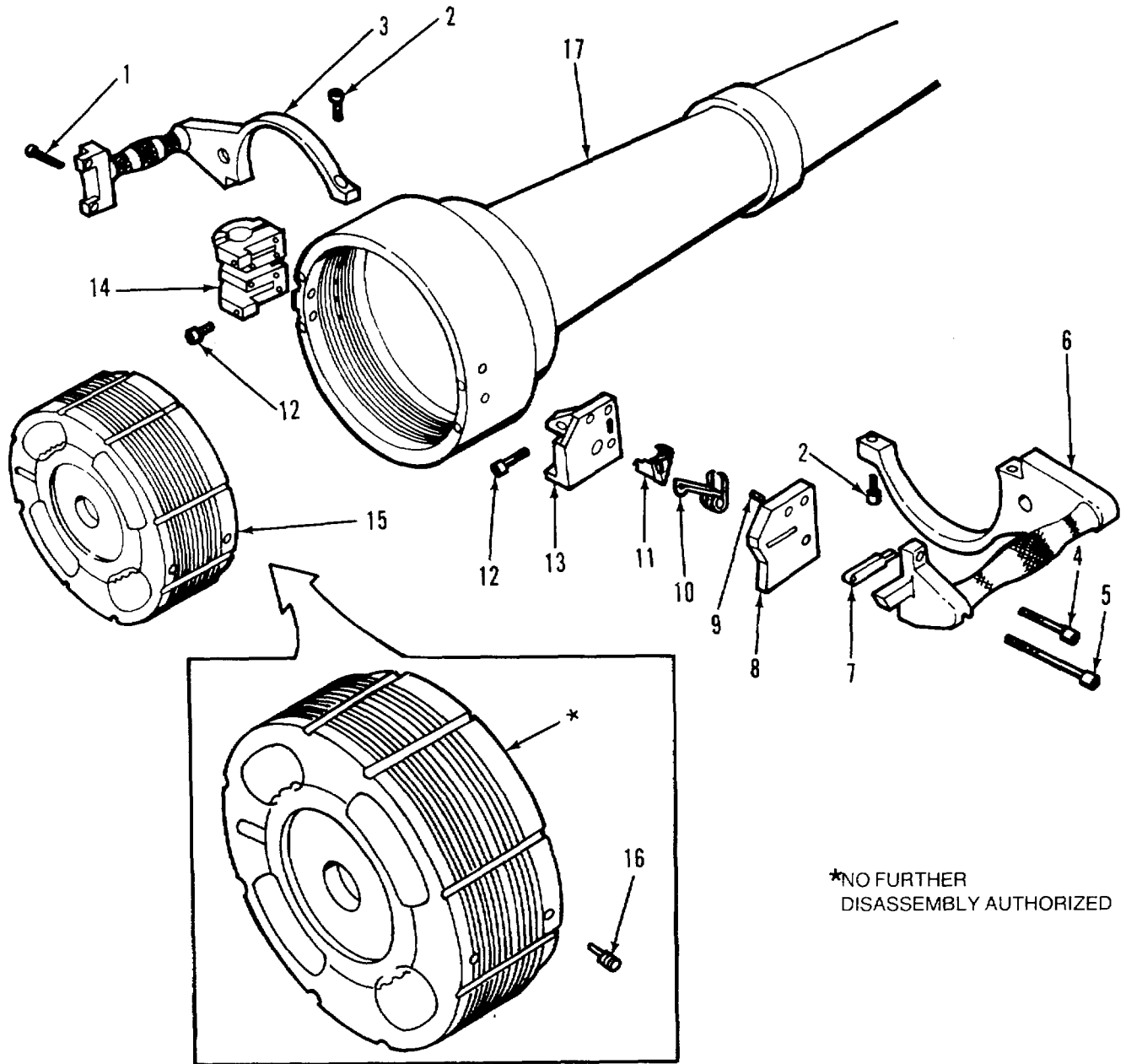


Figure 7. Cannon, 106-MM: M206 and Vent Assembly.

## SECTION II

TM 9-1015-221-20P

| (1)<br>ITEM<br>NO | (2)<br>SMR<br>CODE | (3)<br>FSCM | (4)<br>PART<br>NUMBER | (5)<br>DESCRIPTION AND USABLE ON CODES (UOC)  | (6)<br>QTY |
|-------------------|--------------------|-------------|-----------------------|---|------------|
|                   |                    |             |                       | GROUP 04 CANNON, 106-MM. M206<br>(11578014) AND<br>GROUP 0406 VENT ASSEMBLY (7309187) |            |
|                   |                    |             |                       | FIG. 7 CANNON, 106-MM: M206 AND<br>VENT ASSEMBLY                                      |            |
| 1                 | PAOZZ              | 96906       | MS16998-50            | SCREW, CAP, SOCKET HEAD .....   | 4          |
| 2                 | PAOZZ              | 96906       | MS16998-74            | SCREW, CAP, SOCKET HEAD .....   | 2          |
| 4                 | PAOZZ              | 96906       | MS16998-47            | SCREW, CAP, SOCKET HEAD.....  | 1          |
| 5                 | PAOZZ              | 19203       | 9406768               | SCREW, CAP, SOCKET HEAD .....   | 1          |
| 7                 | PAOOO              | 19206       | 7307472               | ROD LANYARD ASSEMBLY .....  | 1          |
| 8                 | PAOZZ              | 19206       | 7307503               | COVER TRIGGER .....   | 1          |
| 9                 | PAOZZ              | 96906       | MS16562-49            | PIN, SPRING.....  | 1          |
| 10                | PAOZZ              | 19206       | 11578016              | SPRING, HELICAL TORSION .....   | 1          |
| 11                | PAOZZ              | 19206       | 11578015              | TRIGGER .....   | 1          |
| 12                | PAOZZ              | 96906       | MS16998-45            | SCREW, CAP, SOCKET HEAD .....   | 4          |
| 13                | PAOZZ              | 19206       | 7307502               | HOUSING, TRIGGER .....  | 1          |
| 15                | PAOOO              | 19206       | 7309187               | VENT ASSEMBLY .....   | 1          |
| 16                | PAOZZ              | 19206       | 7309107               | ..SETSCREW .....  | 1          |

END OF FIGURE

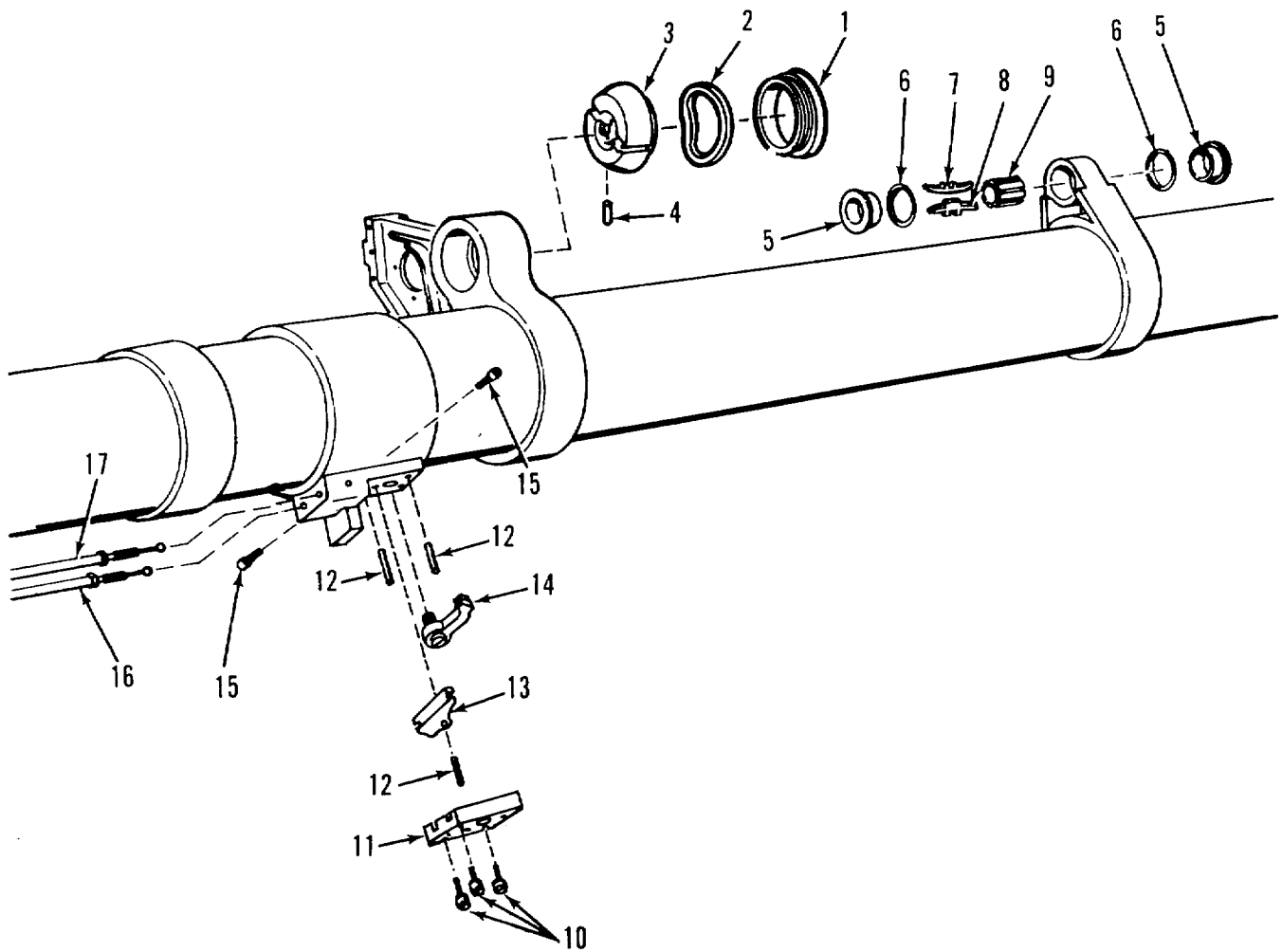


Figure 8. Cannon, 106-MM: M206.

| (1)<br>ITEM<br>NO | (2)<br>SMR<br>CODE | (3)<br>FSCM | (4)<br>PART<br>NUMBER | (5)<br>DESCRIPTION AND USABLE ON CODES (UOC) | (6)<br>QTY |
|-------------------|--------------------|-------------|-----------------------|--|------------|
|-------------------|--------------------|-------------|-----------------------|--|------------|

GROUP 04 CANNON, 106-MM: M206  
(11578014)

FIG. 8 CANNON, 106-MM: M206

|    |       |       |            |                                      |   |
|----|-------|-------|------------|--------------------------------------|---|
| 10 | PAOZZ | 96906 | MS16997-58 | SCREW, CAP, SOCKET HEAD.....         | 3 |
| 11 | PAOZZ | 19206 | 7307512    | COVER, QUICK BREAKDOWN .....         | 1 |
| 15 | PAOZZ | 19206 | 7307478    | SETSCREW.....                        | 2 |
| 16 | PAOZZ | 19206 | 11578002   | CABLE 50 CALIBER SPOTTING GUN.....   | 1 |
| 17 | PAOZZ | 19206 | 11577981   | CABLE, FIRING, 106MM RECOILLESS..... | 1 |
|    |       |       |            | RIFLE .....                          |   |

END OF FIGURE

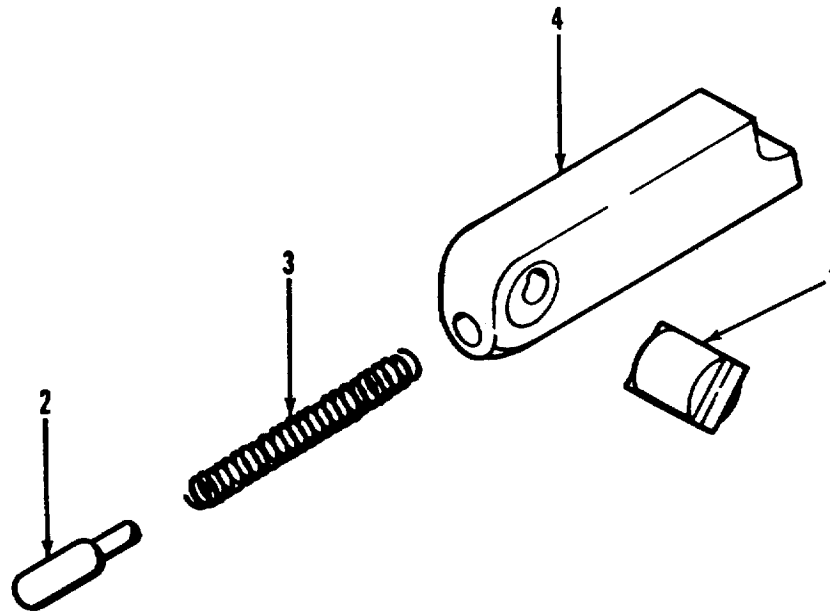


Figure 9. Detent Assembly, Cartridge Case.

| (1)<br>ITEM<br>NO                                       | (2)<br>SMR<br>CODE | (3)<br>FSCM | (4)<br>PART<br>NUMBER | (5)<br>DESCRIPTION AND USABLE ON CODES (UOC) | (6)<br>QTY |
|---|--------------------|-------------|-----------------------|--|------------|
| GROUP 0401 DETENT ASSEMBLY,<br>CARTRIDGE CASE (7230797) |                    |             |                       |  |            |
| FIG. 9 DETENT ASSEMBLY,<br>CARTRIDGE CASE               |                    |             |                       |  |            |
| 1   | PAOZZ              | 19206       | 7230800               | FULCRUM.....                                 | 1          |
| 2   | PAOZZ              | 19206       | 11578301              | PLUNGER, DETENT .....                        | 1          |
| 3   | PACZZ              | 19206       | 7230809               | SPRING, HELICAL COMPRESSION .....            | 1          |
| 4   | XAOZZ              | 19204       | 7230794               | BODY, CARTRIDGE, CASE .....                  | 1          |

END OF FIGURE

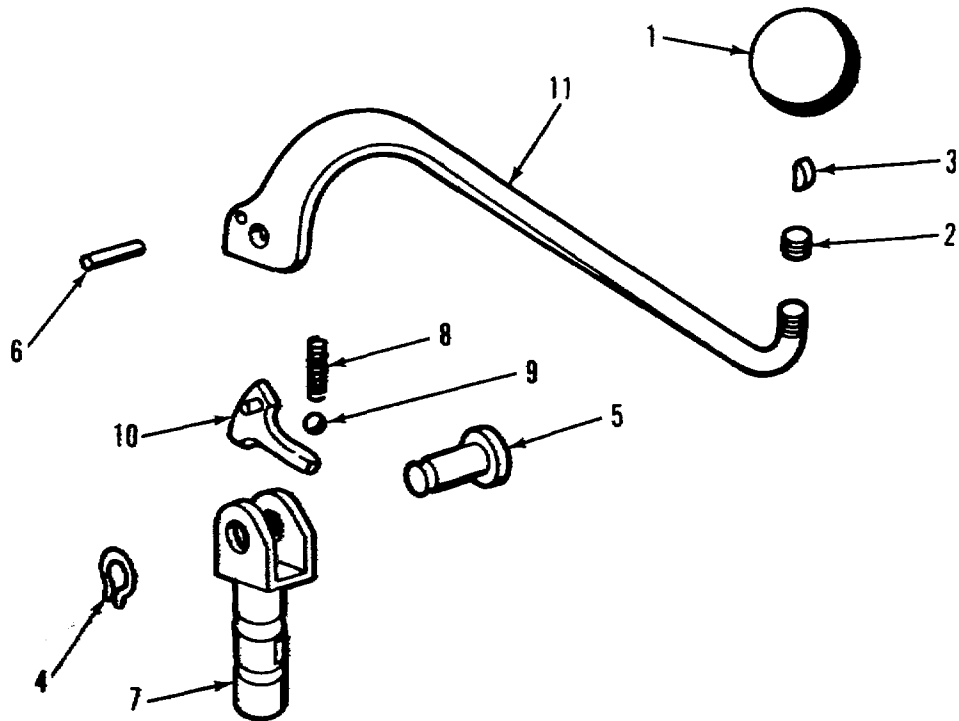


Figure 10. Breechblock Operating Lever.

| (1)<br>ITEM<br>NO | (2)<br>SMR<br>CODE | (3)<br>FSCM | (4)<br>PART<br>NUMBER | (5)<br>DESCRIPTION AND USABLE ON CODES (UOC) | (6)<br>QTY |
|-------------------|--------------------|-------------|-----------------------|--|------------|
|-------------------|--------------------|-------------|-----------------------|--|------------|

GROUP 0403 BREECHBLOCK OPERATING  
LEVER (7307520)

FIG. 10 BREECHBLOCK OPERATING LEVER

|    |       |       |              |                                   |   |
|----|-------|-------|--------------|-----------------------------------|---|
| 1  | PAOZZ | 13206 | 7307477      | BALL BREECH BLOCK .....           | 1 |
| 2  | PAOZZ | 88044 | AN565D820-16 | SETSCREW .....                    | 1 |
| 3  | PACZZ | 96906 | MS35756-6    | KEY, WOODRUFF .....               | 1 |
| 4  | PAOZZ | 96906 | MS16626-1050 | RING, RETAINING .....             | 1 |
| 5  | PAOZZ | 19206 | 8767165      | PIN, GROOVED, HEADED .....        | 1 |
| 6  | PAOZZ | 19206 | 7307476      | PIN, STRAIGHT HEADLESS .....      | 1 |
| 7  | PAOZZ | 19206 | 7307509      | PIN, GROOVED, HEADED .....        | 1 |
| 8  | PAOZZ | 19206 | 7307475      | SPRING, HELICAL COMPRESSION ..... | 1 |
| 9  | PAOZZ | 96906 | MS19061-13   | BALL, BEARING .....               | 1 |
| 10 | PAOZZ | 19206 | 7307484      | CAM, CONTROL .....                | 1 |
| 11 | PAOZZ | 19206 | 7307523      | BODY, BREECHBLOCK .....           | 1 |

END OF FIGURE

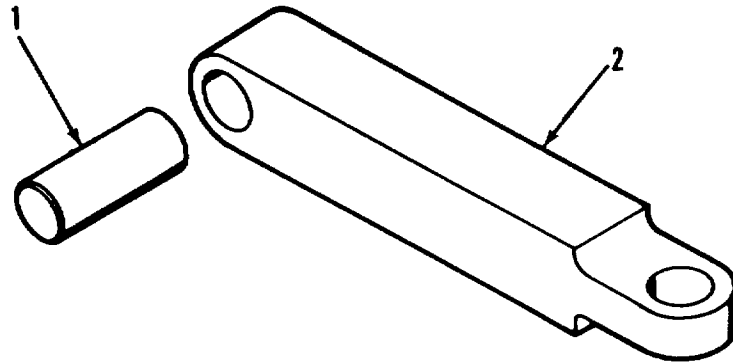


Figure 11. Lanyard Rod Assembly.

| (1)<br>ITEM<br>NO | (2)<br>SMR<br>CODE | (3)<br>FSCM | (4)<br>PART<br>NUMBER | (5)<br>DESCRIPTION AND USABLE ON CODES (UOC) | (6)<br>QTY |
|-------------------|--------------------|-------------|-----------------------|--|------------|
|-------------------|--------------------|-------------|-----------------------|--|------------|

GROUP 0404 LANYARD ROD ASSEMBLY  
(73047472)

FIG. 11 LANYARD ROD ASSEMBLY

|   |       |       |             |                   |   |
|---|-------|-------|-------------|-------------------|---|
| 1 | PAOZZ | 96906 | MS16562-141 | PIN, SPRING ..... | 1 |
| 2 | XAOZZ | 19206 | 7307435     | BODY .....        | 1 |

END OF FIGURE

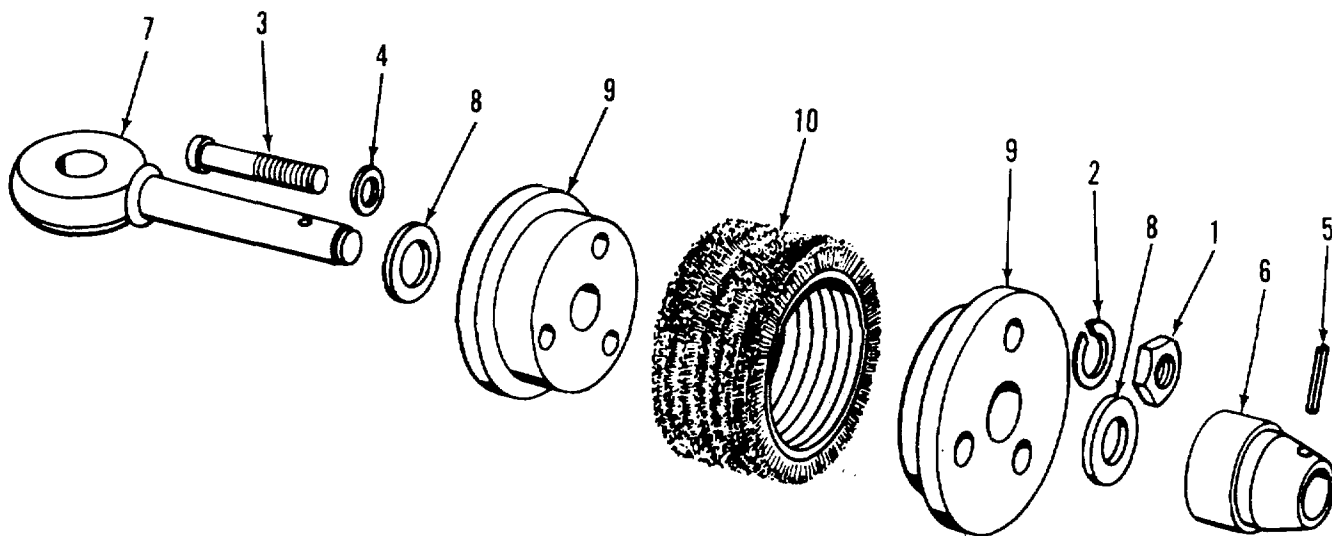


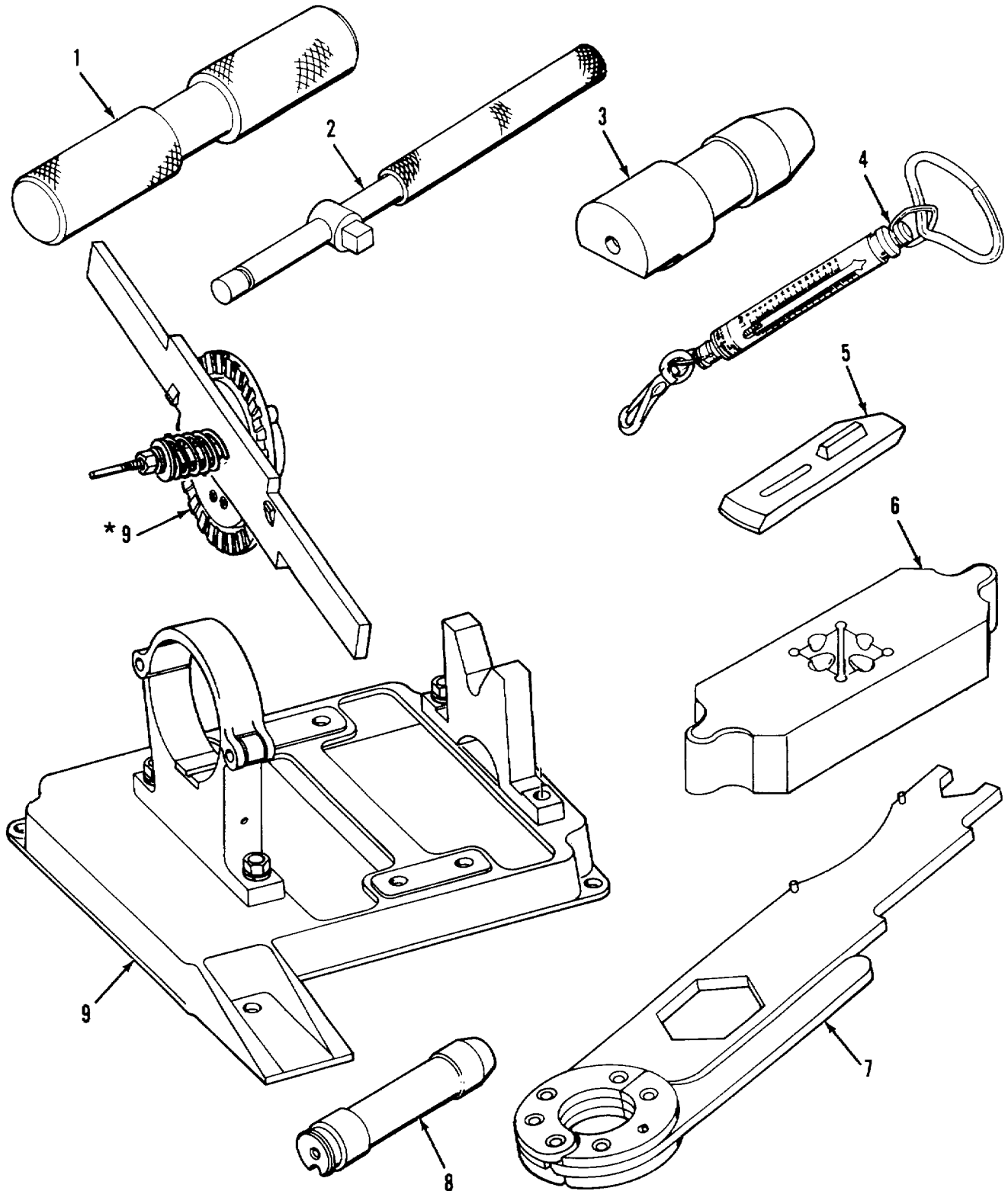
Figure 12. Artillery Cleaning Brush.

| (1)<br>ITEM<br>NO                              | (2)<br>SMR<br>CODE | (3)<br>FSCM | (4)<br>PART<br>NUMBER | (5)<br>DESCRIPTION AND USABLE ON CODES (UOC) | (6)<br>QTY |
|--|--------------------|-------------|-----------------------|--|------------|
| GROUP 13 ARTILLERY CLEANING<br>BRUSH (8766039) |                    |             |                       |  |            |
| FIG. 12 ARTILLERY CLEANING BRUSH               |                    |             |                       |  |            |
| 1  | PAOZZ              | 96906       | MS51967-2             | NUT, PLAIN. HEXAGON .....                    | 3          |
| 2  | PAOZZ              | 96906       | MS35338-63            | WASHER. LOCK .....                           | 3          |
| 3  | PAOZZ              | 96906       | MS90728-16            | SCREW, CAP, HEXAGON HEAD .....               | 3          |
| 4  | PAOZZ              | 96906       | MS27183-10            | WASHER, FLAT.....                            | 3          |
| 5  | PAOZZ              | 96906       | MS16562-42            | PIN, SPRING .....                            | 1          |
| 6  | PAOZZ              | 19206       | 8766029               | ADAPTER, BORE BRUSH .....                    | 1          |
| 7  | PAOZZ              | 19206       | 8766031               | BOLT BLANK .....                             | 1          |
| 8  | PAOZZ              | 96906       | MS27183-18            | WASHER. FLAT .....                           | 2          |
| 9  | PAOZZ              | 19206       | 8766038               | CAP END .....                                | 2          |
| 10   | PAOZZ              | 19207       | 6157208               | BRUSH SECTION .....                          | 1          |

END OF FIGURE



Section III. SPECIAL TOOLS LIST



\*SUPPLIED WITH IDENTICALLY NUMBERED PART

Figure 13. Special Tools.

| (1)<br>ITEM<br>NO        | (2)<br>SMR<br>CODE | (3)<br>FSCM | (4)<br>PART<br>NUMBER | (5)<br>DESCRIPTION AND USABLE ON CODES (UOC)  | (6)<br>QTY |
|--------------------------|--------------------|-------------|-----------------------|---|------------|
| GROUP 9500 SPECIAL TOOLS |                    |             |                       |   |            |
| FIG. 13 SPECIAL TOOLS    |                    |             |                       |   |            |
| 2                        | PAOZZ              | 50024       | 2479141               | HANDLE, SOCKET WRENC WRENCH -T-<br>SLIDING 3/4 DRIVE 18-1/2 O/A LG .....<br>BOI: 1 AUTH BY NUMBERED BTRY/CO AND<br>SIMILAR HQ PERFG ORG/AVUM MAINT<br>FOR OTHER UNITS |            |
| 5                        | PAOZZ              | 19206       | 7307536               | TOOL, FIRING CABLE .....<br>BOI: 1 AUTH BY NUMBERED BTRY/CO AND<br>SIMILAR HQ PERFG ORG/AVUM MAINT<br>FOR OTHER UNITS   |            |
| 6                        | PAOZZ              | 19206       | 7309111               | TOOL, RECOIL, COMPENSATING RING<br>ADJUSTING.....<br>BOI: 1 AUTH BY NUMBERED BTRY/CO AND<br>SIMILAR HO PERFG ORG/AVUM MAINT<br>FOR OTHER UNITS                        |            |

END OF FIGURE

## Section IV. NATIONAL STOCK NUMBER AND PART NUMBER INDEX

| NATIONAL STOCK NUMBER INDEX |      |      |                  |      |      |
|-----------------------------|------|------|------------------|------|------|
| STOCK NUMBER                | FIG. | ITEM | STOCK NUMBER     | FIG. | ITEM |
| 1015-00-004-2318            | 6    | 15   | 5305-00-730-7478 | 8    | 15   |
|                             | 9    | 2    | 1015-00-730-7502 | 7    | 13   |
| 5315-00-013-7137            | 4    | 1    | 1015-00-730-7503 | 7    | 8    |
| 5315-00-051-8636            | 4    | 14   | 1015-00-730-7509 | 10   | 7    |
| 5315-00-052-6697            | 11   | 1    | 1015-00-730-7512 | 8    | 11   |
| 5305-00-052-8251            | 6    | 1    | 1015-00-730-7523 | 10   | 11   |
|                             | 7    | 1    | 4933-00-730-7536 | 13   | 5    |
| 5305-00-071-2513            | 12   | 3    | 5310-00-761-6882 | 12   | 1    |
| 1015-00-089-8542            | 8    | 17   | 1015-00-782-9872 | 12   | 6    |
| 5120-00-099-8544            | 13   | 2    | 1015-00-782-9873 | 12   | 9    |
| 5306-00-143-1678            | 12   | 7    | 5310-00-809-4058 | 12   | 4    |
| 5315-00-240-1008            | 12   | 5    | 5310-00-809-5998 | 12   | 8    |
| 5365-00-256-2861            | 10   | 4    | 5315-00-844-3966 | 7    | 9    |
| 5310-00-274-8715            | 12   | 2    | 5360-00-854-4471 | 2    | 3    |
| 1290-00-300-8034            | 1    | 9    | 5360-00-873-6959 | 7    | 10   |
| 4933-00-334-0498            | 13   | 6    | 1015-00-878-0032 | 8    | 16   |
| 5305-00-336-1616            | 7    | 16   | 1240-00-886-5888 | 1    | 8    |
| 1015-00-340-3426            | 7    | 15   | 5315-00-898-9823 | 3    | 3    |
| 1240-00-344-4689            | 1    | 7    | 3110-00-948-9796 | 10   | 9    |
| 1005-00-345-3827            | 2    | 2    | 5305-00-978-9378 | 8    | 10   |
| 1240-00-346-7676            | 5    | 1    | 5305-00-983-6662 | 7    | 12   |
| 1015-00-445-9902            | 10   | 10   | 5305-00-983-6664 | 7    | 4    |
| 5315-00-474-7405            | 10   | 5    | 5305-00-983-7448 | 7    | 2    |
| 1290-00-535-7761            | 1    | 6    | 1015-00-998-6072 | 7    | 11   |
| 5305-00-576-2150            | 10   | 2    | 1015-00-998-6073 | 6    | 13   |
| 1005-00-603-1297            | 2    | 8    | 1015-00-998-6074 | 6    | 8    |
| 1015-00-615-7208            | 12   | 10   | 1015-00-998-6075 | 6    | 17   |
| 5315-00-616-5514            | 6    | 3    | 1015-01-044-6921 | 2    | 1    |
|                             | 10   | 3    |                  |      |      |
| 5305-00-638-7518            | 7    | 5    |                  |      |      |
| 1015-00-672-8735            | 6    | 7    |                  |      |      |
| 1015-00-679-0481            | 6    | 4    |                  |      |      |
| 1015-00-723-0797            | 6    | 5    |                  |      |      |
| 1015-00-723-0799            | 6    | 14   |                  |      |      |
| 1015-00-723-0800            | 9    | 1    |                  |      |      |
| 3110-00-723-0807            | 6    | 11   |                  |      |      |
| 5360-00-723-0809            | 6    | 16   |                  |      |      |
|                             | 9    | 3    |                  |      |      |
| 5360-00-723-0810            | 6    | 9    |                  |      |      |
| 1005-00-726-6357            | 3    | 4    |                  |      |      |
| 1005-00-726-6374            | 3    | 2    |                  |      |      |
| 1005-00-726-6393            | 3    | 5    |                  |      |      |
| 1005-00-726-6400            | 3    | 1    |                  |      |      |
| 5360-00-726-6415            | 2    | 9    |                  |      |      |
| 5360-00-726-6416            | 3    | 6    |                  |      |      |
| 1005-00-726-6561            | 4    | 15   |                  |      |      |
| 1015-00-730-7472            | 7    | 7    |                  |      |      |
| 5360-00-730-7475            | 10   | 8    |                  |      |      |
| 5315-00-730-7476            | 10   | 6    |                  |      |      |
| 1015-00-730-7477            | 10   | 1    |                  |      |      |

## NATIONAL STOCK NUMBER AND PART NUMBER INDEX

| CAGEC | PART NUMBER  | PART NUMBER INDEX |                  | FIG. | ITEM |
|-------|--------------|-------------------|------------------|------|------|
|       |              |                   | STOCK NUMBER     |      |      |
| 88044 | AN565D820H6  |                   | 5305-00-576-2150 | 10   | 2    |
| 96906 | MS16562-120  |                   | 5315-00-051-8636 | 4    | 14   |
| 96906 | MS16562-131  |                   | 5315-00-898-9823 | 3    | 3    |
| 96906 | MS16562-141  |                   | 5315-00-052-6697 | 11   | 1    |
| 96906 | MS16562-42   |                   | 5315-00-240-1008 | 12   | 5    |
| 96906 | MS16562-49   |                   | 5315-00-844-3966 | 7    | 9    |
| 96906 | MS16626-1050 |                   | 5365-00-256-2861 | 10   | 4    |
| 96906 | MS16997-58   |                   | 5305-00-978-9378 | 8    | 10   |
| 96906 | MS16998-45   |                   | 5305-00-983-6662 | 7    | 12   |
| 96906 | MS16998-47   |                   | 5305-00-983-6664 | 7    | 4    |
| 96906 | MS16998-50   |                   | 5305-00-052-8251 | 6    | 1    |
|       |              |                   |                  | 7    | 1    |
| 96906 | MS16998-74   |                   | 5305-00-983-7448 | 7    | 2    |
| 96906 | MS19061-13   |                   | 3110-00-948-9796 | 10   | 9    |
| 96906 | MS24665-814  |                   | 5315-00-013-7137 | 4    | 1    |
| 96906 | MS27183-10   |                   | 5310-00-809-4058 | 12   | 4    |
| 96906 | MS27183-18   |                   | 5310-00-809-5998 | 12   | 8    |
| 96906 | MS35338-63   |                   | 5310-00-274-8715 | 12   | 2    |
| 96906 | MS35756-6    |                   | 5315-00-616-5514 | 6    | 3    |
|       |              |                   |                  | 10   | 3    |
| 96906 | MS51967-2    |                   | 5310-00-761-6882 | 12   | 1    |
| 96906 | MS90728-16   |                   | 5305-00-071-2513 | 12   | 3    |
| 19206 | 11577981     |                   | 1015-00-089-8542 | 8    | 17   |
| 19206 | 11578002     |                   | 1015-00-878-0032 | 8    | 16   |
| 13206 | 11578015     |                   | 1015-00-998-6072 | 7    | 11   |
| 19206 | 11578016     |                   | 5360-00-873-6959 | 7    | 10   |
| 19206 | 11578017     |                   | 1015-00-998-6073 | 6    | 13   |
| 19206 | 11578018     |                   | 1015-00-998-6074 | 6    | 8    |
| 19206 | 11578019     |                   | 1015-00-998-6075 | 6    | 17   |
| 19206 | 11578301     |                   | 1015-00-004-2318 | 6    | 15   |
|       |              |                   |                  | 9    | 2    |
| 19204 | 12003046     |                   | 1015-01-044-6921 | 2    | 1    |
| 50024 | 2479141      |                   | 5120-00-099-8544 | 13   | 2    |
| 19207 | 6157208      |                   | 1015-00-615-7208 | 12   | 10   |
| 19204 | 7230794      |                   |                  | 9    | 4    |
| 19206 | 7230797      |                   | 1015-00-723-0797 | 6    | 5    |
| 19206 | 7230799      |                   | 1015-00-723-0799 | 6    | 14   |
| 19206 | 7230800      |                   | 1015-00-723-0800 | 9    | 1    |
| 19206 | 7230807      |                   | 3110-00-723-0807 | 6    | 11   |
| 19206 | 7230809      |                   | 5360-00-723-0809 | 6    | 16   |
|       |              |                   |                  | 9    | 3    |
| 19206 | 7230810      |                   | 5360-00-723-0810 | 6    | 9    |
| 19204 | 7266341      |                   |                  | 2    | 7    |
| 19204 | 7266357      |                   | 1005-00-726-6357 | 3    | 4    |
| 19204 | 7266374      |                   | 1005-00-726-6374 | 3    | 2    |
| 19204 | 7266393      |                   | 1005-00-726-6393 | 3    | 5    |
| 19204 | 7266400      |                   | 1005-00-726-6400 | 3    | 1    |
| 19204 | 7266415      |                   | 5360-00-726-6415 | 2    | 9    |
| 19204 | 7266416      |                   | 5360-00-726-6416 | 3    | 6    |
| 19204 | 7266561      |                   | 1005-00-726-6561 | 4    | 15   |
| 19204 | 7267851      |                   | 1005-00-345-3827 | 2    | 2    |

## NATIONAL STOCK NUMBER AND PART NUMBER INDEX

| CAGEC | PART NUMBER | PART NUMBER INDEX |                  | FIG. | ITEM |
|-------|-------------|-------------------|------------------|------|------|
|       |             |                   | STOCK NUMBER     |      |      |
| 19204 | 7268393     |                   | 1005-00-603-1297 | 2    | 8    |
| 19206 | 7307472     |                   | 1015-00-730-7472 | 7    | 7    |
| 19206 | 7307475     |                   | 5360-00-730-7475 | 10   | 8    |
| 19206 | 7307476     |                   | 5315-00-730-7476 | 10   | 6    |
| 19206 | 7307477     |                   | 1015-00-730-7477 | 10   | 1    |
| 19206 | 7307478     |                   | 5305-00-730-7478 | 8    | 15   |
| 19206 | 7307484     |                   | 1015-00-445-9902 | 10   | 10   |
| 19206 | 7307485     |                   |                  | 11   | 2    |
| 19206 | 7307502     |                   | 1015-00-730-7502 | 7    | 13   |
| 19206 | 7307503     |                   | 1015-00-730-7503 | 7    | 8    |
| 19206 | 7307509     |                   | 1015-00-730-7509 | 10   | 7    |
| 19206 | 7307512     |                   | 1015-00-730-7512 | 8    | 11   |
| 19206 | 7307520     |                   |                  | 6    | 2    |
| 19206 | 7307523     |                   | 1015-00-730-7523 | 10   | 11   |
| 19206 | 7307536     |                   | 4933-00-730-7536 | 13   | 5    |
| 19206 | 7309107     |                   | 5305-00-336-1616 | 7    | 16   |
| 19206 | 7309111     |                   | 4933-00-334-0498 | 13   | 6    |
| 19206 | 7309187     |                   | 1015-00-340-3426 | 7    | 15   |
| 19204 | 7791229     |                   | 5360-00-854-4471 | 2    | 3    |
| 19200 | 8228878     |                   | 1240-00-346-7676 | 5    | 1    |
| 19200 | 8286960     |                   | 1240-00-886-5888 | 1    | 8    |
| 19200 | 8293769     |                   | 1290-00-300-8034 | 1    | 9    |
| 19200 | 8299670     |                   | 1240-00-344-4689 | 1    | 7    |
| 19200 | 8299677     |                   | 1290-00-535-7761 | 1    | 6    |
| 19206 | 8766017     |                   | 1015-00-679-0481 | 6    | 4    |
| 19206 | 8766029     |                   | 1015-00-782-9872 | 12   | 6    |
| 19206 | 8766031     |                   | 5306-00-143-1678 | 12   | 7    |
| 19206 | 8766038     |                   | 1015-00-782-9873 | 12   | 9    |
| 19206 | 8766068     |                   | 1015-00-672-8735 | 6    | 7    |
| 19206 | 8767165     |                   | 5315-00-474-7405 | 10   | 5    |
| 19203 | 9406768     |                   | 5305-00-638-7518 | 7    | 5    |

By Order of the Secretary of the Army:

JOHN A. WICKHAM, JR.  
*General, United States Army*  
*Chief of Staff*

Official:

R. L. DILWORTH  
*Brigadier General, United States Army*  
*The Adjutant General*

DISTRIBUTION:

To be distributed in accordance with DA Form 12-40, Organizational maintenance requirements for Rifle, Recoilles, 106-MM, M40A2, M40A4.

RECOMMENDED CHANGES TO EQUIPMENT TECHNICAL PUBLICATIONS



THEN...JOT DOWN THE DOPE ABOUT IT ON THIS FORM. CAREFULLY TEAR IT OUT, FOLD IT AND DROP IT IN THE MAIL!

SOMETHING WRONG WITH THIS PUBLICATION?

FROM: (PRINT YOUR UNIT'S COMPLETE ADDRESS)

Your mailing address

DATE SENT

Date you filled out form

PUBLICATION NUMBER

TM 9-1015-221-20P

PUBLICATION DATE

Date of TM

PUBLICATION TITLE

ORG RPSTL for 106-MM Recoilless Rifle: M40A2 and M40A4

BE EXACT...PIN-POINT WHERE IT IS

| PAGE NO. | PARA-GRAPH | FIGURE NO. | TABLE NO. |
|----------|------------|------------|-----------|
|----------|------------|------------|-----------|

20

6

IN THIS SPACE TELL WHAT IS WRONG AND WHAT SHOULD BE DONE ABOUT IT:

The ILLUSTRATION Shows 1EA.  
ITEM 10 CALLS FOR 3EA.  
Where are the others?

**SAMPLE**

TEAR ALONG DOTTED LINE.

PRINTED NAME, GRADE OR TITLE, AND TELEPHONE NUMBER

JOHN SMITH, S.SGT 793/XXXX

SIGN HERE

*John Smith*

RECOMMENDED CHANGES TO EQUIPMENT TECHNICAL PUBLICATIONS



THEN...JOT DOWN THE DOPE ABOUT IT ON THIS FORM. CAREFULLY TEAR IT OUT, FOLD IT AND DROP IT IN THE MAIL!

SOMETHING WRONG WITH THIS PUBLICATION?

FROM: (PRINT YOUR UNIT'S COMPLETE ADDRESS)

DATE SENT

PUBLICATION NUMBER  
TM 9-1015-221-20P

PUBLICATION DATE  
19 May 86

PUBLICATION TITLE  
ORG RPSTL for 106-MM Recoilless Rifle: M40A2 and M40A4

BE EXACT...PIN-POINT WHERE IT IS

IN THIS SPACE TELL WHAT IS WRONG AND WHAT SHOULD BE DONE ABOUT IT:

| PAGE NO. | PARA-GRAPH | FIGURE NO. | TABLE NO. |
|----------|------------|------------|-----------|
|          |            |            |           |

TEAR ALONG DOTTED LINE

PRINTED NAME, GRADE OR TITLE, AND TELEPHONE NUMBER

SIGN HERE



REVERSE OF DA FORM 2028-2

FILL IN YOUR  
UNIT'S ADDRESS

FOLD BACK

DEPARTMENT OF THE ARMY

\_\_\_\_\_  
\_\_\_\_\_

OFFICIAL BUSINESS

TEAR ALONG DOTTED LINE

Commander  
US Army Armament, Munitions and Chemical  
Command  
ATTN: AMSMC-MAS  
Rock Island, IL 61201-9990

### THE METRIC SYSTEM AND EQUIVALENTS

#### LINEAR MEASURE

1 Centimeter = 10 Millimeters = 0.01 Meters = 0.3937 Inches  
 1 Meter = 100 Centimeters = 1000 Millimeters = 39.37 Inches  
 1 Kilometer = 1000 Meters = 0.621 Miles

#### WEIGHTS

1 Gram = 0.001 Kilograms = 1000 Milligrams = 0.035 Ounces  
 1 Kilogram = 1000 Grams = 2.2 Lb  
 1 Metric Ton = 1000 Kilograms = 1 Megagram = 1.1 Short Tons

#### LIQUID MEASURE

1 Milliliter = 0.001 Liters = 0.0338 Fluid Ounces  
 1 Liter = 1000 Milliliters = 33.82 Fluid Ounces

#### SQUARE MEASURE

1 Sq. Centimeter = 100 Sq. Millimeters = 0.155 Sq. Inches  
 1 Sq. Meter = 10,000 Sq. Centimeters = 10.76 Sq. Feet  
 1 Sq. Kilometer = 1,000,000 Sq. Meters = 0.386 Sq. Miles

#### CUBIC MEASURE

1 Cu Centimeter = 1000 Cu Millimeters = 0.06 Cu Inches  
 1 Cu Meter = 1,000,000 Cu Centimeters = 35.31 Cu. Feet

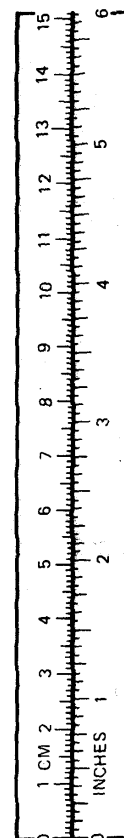
#### TEMPERATURE

$5/9 (^{\circ}F - 32) = ^{\circ}C$   
 212<sup>o</sup> Fahrenheit is equivalent to 100<sup>o</sup> Celsius  
 90<sup>o</sup> Fahrenheit is equivalent to 32<sup>o</sup> Celsius  
 32<sup>o</sup> Fahrenheit is equivalent to 0<sup>o</sup> Celsius  
 $9/5 (^{\circ}C + 32) = ^{\circ}F$

### APPROXIMATE CONVERSION FACTORS

| <u>TO CHANGE</u>             | <u>TO</u>                  | <u>MULTIPLY BY</u> |
|------------------------------|----------------------------|--------------------|
| Inches .....                 | Centimeters .....          | 2.540              |
| Feet .....                   | Meters .....               | 0.305              |
| Yards .....                  | Meters .....               | 0.914              |
| Miles .....                  | Kilometers .....           | 1.609              |
| Square Inches .....          | Square Centimeters .....   | 6.451              |
| Square Feet .....            | Square Meters .....        | 0.093              |
| Square Yards .....           | Square Meters .....        | 0.836              |
| Square Miles .....           | Square Kilometers .....    | 2.590              |
| Acres .....                  | Square Hectometers .....   | 0.405              |
| Cubic Feet .....             | Cubic Meters .....         | 0.028              |
| Cubic Yards .....            | Cubic Meters .....         | 0.765              |
| Fluid Ounces .....           | Milliliters .....          | 29.573             |
| Pints .....                  | Liters .....               | 0.473              |
| Quarts .....                 | Liters .....               | 0.946              |
| Gallons .....                | Liters .....               | 3.785              |
| Ounces .....                 | Grams .....                | 28.349             |
| Pounds .....                 | Kilograms .....            | 0.454              |
| Short Tons .....             | Metric Tons .....          | 0.0907             |
| Pound-Feet .....             | Newton-Meters .....        | 1.356              |
| Pounds per Square Inch ..... | Kilopascals .....          | 6.895              |
| Miles per Gallon .....       | Kilometers per Liter ..... | 0.425              |
| Miles per Hour .....         | Kilometers per Hour .....  | 1.609              |

| <u>TO CHANGE</u>           | <u>TO</u>                    | <u>MULTIPLY BY</u> |
|----------------------------|------------------------------|--------------------|
| Centimeters .....          | Inches .....                 | 0.394              |
| Meters .....               | Feet .....                   | 3.280              |
| Meters .....               | Yards .....                  | 1.094              |
| Kilometers .....           | Miles .....                  | 0.621              |
| Square Centimeters .....   | Square Inches .....          | 0.155              |
| Square Meters .....        | Square Feet .....            | 10.764             |
| Square Meters .....        | Square Yards .....           | 1.196              |
| Square Kilometers .....    | Square Miles .....           | 0.386              |
| Square Hectometers .....   | Acres .....                  | 2.471              |
| Cubic Meters .....         | Cubic Feet .....             | 35.315             |
| Cubic Meters .....         | Cubic Yards .....            | 1.308              |
| Milliliters .....          | Fluid Ounces .....           | 0.034              |
| Liters .....               | Pints .....                  | 2.113              |
| Liters .....               | Quarts .....                 | 1.057              |
| Liters .....               | Gallons .....                | 0.264              |
| Grams .....                | Ounces .....                 | 0.035              |
| Kilograms .....            | Pounds .....                 | 2.205              |
| Metric Tons .....          | Short Tons .....             | 1.102              |
| Newton-Meters .....        | Pound-Feet .....             | 0.738              |
| Kilopascals .....          | Pounds per Square Inch ..... | 0.145              |
| Kilometers per Liter ..... | Miles per Gallon .....       | 2.354              |
| Kilometers per Hour .....  | Miles per Hour .....         | 0.621              |



TA08991

**TM 9-1015-221-20P**

**PIN: 026475-000**